

DIRECT-TO-CARD
PRINTER



MC310

THE DIRECT-TO-CARD PRINTER

Designed to perfectly fit into any card issuance environment, the new Matica MC310 direct-to-card printer offers a superior print quality and a complete line of encoding, lamination and communication options. Its versatility provides a solution to all vertical markets which need to run card issuance programs that require reliable and consistent high quality printing, converting the MC310 into the most flexible and reliable card printer platform in the market.

Reliable and easy-to-use, the Matica MC310 offers high-performance color card printing. Available as a single side, the MC310 can easily evolve to dual-side printing, anytime, anywhere without the need to install additional hardware components. The 4 LED status indicators on the front of the printer, in combination with the 2-line LCD display, facilitates the use of the printer providing all necessary information to the operator, making the MC310 extremely easy to use.

Optional in-line magnetic stripe encoder and dual interface encoders for contact/contactless smart cards, maximizes its functionality for a broader set of application uses, such as access control, time & attendance, payment services and many more.

The MC310 is accompanied with a comprehensive ribbon program to cover all issuance needs in all vertical markets, including the new Matica YMCSKO ribbon to increase the

number of visual security elements (VSE) on the card for security applications.

Need more durable and secure cards? The use of the optional, easy-to-install, in-line MC-L2 lamination module in combination with the MC310 allows to issue cards which last more and have additional level of security against counterfeit.

The MC310 direct-to-card printer is notably fast with an output of over 180 cards per hour when printing color single side and up to 850 cph when printing in monochrome.

- Color dye-sublimation 300 dpi resolution
- Up to 180 color cards per hour
- Optional lamination module
- Reliable and easy-to-use
- On demand printing or batch processes
- 3 Years Warranty

MC310



MC310

THE DIRECT-TO-CARD PRINTER

TECHNICAL SPECIFICATIONS

Print method	Dye-sublimation direct-to-card
Print Resolution	300 x 300 dpi
Print area	edge-to-edge (CR-80 cards)
Print mode	Dual side (optional)
Print speed	180 cph (YMCKO single side, batch) ⁽¹⁾
Card Thickness	0.25 mm - 1.25 mm (10 mil - 50 mil)
Card Types	CR-80 PVC, PVC-C, Re-writable cards
Input Hopper Capacity	100 cards (0.76 mm - 30 mil thickness)
Output Hopper Capacity	30 cards (front) / 80 cards (rear)
Exception feeding	Included
User Interface	Two-lines x 16 chars LCD display 4 x LED status indicator
Encoding Options	Magnetic stripe encoder ISO7811 Dual interface smart card encoder
Other Options	Matica MC-L2 laminator
Communications Interface	USB 2.0 Ethernet 10BaseT, 100BaseT WiFi 802.11 a/b/g (optional)
chromXpert Ribbon Program	YMCKO (250 prints) YMCKO-K (200 prints) YMCKO-KO (200 prints) ½ YMC-KO (400 prints) ½ YMCKO-KO (250 prints) YMCScKO (200 prints) KO (800 prints) Monochrome (2000 prints) (K, Silver, Gold, White, Red, Green, Blue) Scratch-off (2000 prints)

Smart Ribbon Protection	Ribbon automatic recognition RFID (13.56 MHz) TAG Two-level encodig potection
Memory	128 Mbytes
Safety	Support for Kensington© security lock
Operating Systems	Windows© driver (32/64 bits) XP, SP3, Vista, W7, W8, W10
Integration Tools	SDK available for system integrators EDIssecure© middleware
Warranty	3 years for printer 3 years warranty on printhead ⁽²⁾
Printer Dimensions (H x W x D)	255,6 x 202 x 405,4 mm.
Weight	10 kg. (22 lbs)
Power Supply	220-240V, 50-60 Hz
Operating Environment	Temperature: 15°C-40°C (59° F-104° F) Humidity: 20% - 65% (non-condensing)
Storage Conditions	Temperature: -5° C-70° C (23° F-158° F) Humidity: 20% - 70% (non-condensing)
Quality Standards	- RoHs - CE, FCC, CQC, UL, WEEE - Proposition 65 (California, USA) - Standby mode and reduced power consumption - Sound pressure less than 48 dB (A) in operation mode (ISO 7779) - Energy Star (pending)



⁽¹⁾Using native Matica Windows® Driver
⁽²⁾Warranty subjected to the use of chromXpert® Ribbons

- Corporate cards
- Access control cards
- Campus / student cards
- Customer / loyalty cards
- Government cards

Authorized Reseller / System Integrator

RETRANSFER
CARD PRINTER



MC660

EDIsecure™ MC660

HIGH RESOLUTION RETRANSFER CARD PRINTER

Designed to perfectly fit into any card issuance environment, the new Matica EDIsecure™ MC660 prints high quality cards thanks to its 600dpi resolution printhead on all types of card materials (PVC, PET, Polycarbonate, ABS). It reproduces crisp images and vivid colors making it a great choice for on-demand card issuance programs that require high quality printing.

Reliable and easy-to-use, Matica's EDIsecure™ MC660 card printer offers high-performance printing on various card materials owing to its retransfer printing technology. This ensures immaculate coverage of the card's full surface, including the edges, and this is extended to printing uneven card surfaces, such as smart contact and contactless cards.

The high quality output of its images and colors deliver the sort of results you expect for demanding applications and complex graphical card layouts. It also creates print micro-text which, combined with the use of UV ribbon and the new security ribbon (YMCKSc), increases the number of visual security elements (VSE) on the card for high security applications.

The input hopper, based on a cassette with a capacity of 250 cards, is located on the top of the printer for a user-friendly operation.

The MC660 is notably fast with an output of over 170 cards per hour when printing color single side.

- High resolution (600 dpi)
- Up to 170 color cards per hour
- Reliable and easy-to-use
- On demand printing or batch processes
- Lifetime warranty on the printhead



EDIsecure™ MC660

HIGH RESOLUTION RETRANSFER CARD PRINTER

TECHNICAL SPECIFICATIONS

Print method	Dye-sublimation retransfer
Print Resolution	600 x 600 dpi
Print area	Over-the-edge (CR-80 cards)
Print mode	Dual side (standard configuration)
Print speed	170 cph (YMC single side, batch mode) ⁽²⁾
Card Thickness	0.25 mm - 1.0 mm (10 mil - 40 mil)
Card Types	PVC, PET-G, PET, ABS, PC
Input Hopper Capacity	250 cards (0.76 mm - 30 mil thickness/card)
Output Hopper Capacity	250 cards (0.76 mm - 30 mil thickness/card)
User Interface	Two-line LCD display LED status indicator
Encoding Options	Magnetic stripe encoder ISO7811 Dual interface contact/contactless smart card encoder
Other Options	Matica MC-L lamination module (single or dual sided) Manual lock Dual manual and electronic locks kit (specific part number model)
Communications Interface	USB (1.0, 1.1, 2.0, 3.0). USB cable supplied. Ethernet 10BaseT, 100BaseT Serial RS-232C
Operating Systems (Software Drivers)	Windows 10 (32/64 bits), Windows 8 (32/64 bits), Windows 7 (32/64 bits) Windows Vista (32 bits), Windows Server 2008 R2
Warranty	3 years for printer Lifetime warranty on printhead ⁽¹⁾
Printer Dimensions (H x W x D)	436 x 340 x 297 mm. (17.2" x 13.4" x 11.7")
Weight	20 kg.(44.09 lbs) - main body, not including parts
Power Supply	AC90/125V, 220-240V, 50-60 Hz
Operating Environment	Temperature: 10°C - 30°C Humidity: 20% - 80% (non-condensing)

⁽¹⁾Warranty subjected to the use of chromXpert® Ribbons
⁽²⁾Using native Windows® Driver



- Government card programs
- Corporate cards
- Access control cards
- Campus / student cards
- Customer / loyalty cards

Authorized Reseller / System Integrator

CARD
LAMINATOR



EDIsecure™ MC-L

HIGH PERFORMANCE IN-LINE / STAND-ALONE CARD LAMINATOR

The MC-L laminator module is the ideal solution to maximize the durability and the security of your cards. It is available in two versions: in-line and stand-alone, offering additional versatility, covering a wide range of applications.

The new Matica's EDIsecure™ MC-L lamination module is responding to the growing demand for durable and secure, tamper-resistant cards. The in-line version can be easily connected to the Matica MC660 high resolution retransfer card printer thanks to the connection plate included with the lamination unit.

Easy to install and operate, the MC-L lamination module features a quick heating process and fast laminating performance, being able to laminate both sides of the card in less than 20 seconds thanks to the simultaneous dual-side lamination process.

MC-L provides an extra layer of protection and security which is essential for government credentialing, state driver's licensing and for organizations with high-security requirements. In addition, it offers increased durability and extended card life thanks to the enhanced

mechanical resistance provided by the lamination material.

EDIsecure™ MC-L is available in two versions: in-line, to be connected to the Matica MC660 retransfer card printer, or stand-alone, including an external input hopper for autonomous operation. Both models are available in 3 different configurations: single-side lower cassette, single-side upper cassette and dual side, for enhanced flexibility.

- Maximize card durability and security
- Single/dual sided card laminate
- Stand-alone or in-line operation
- Simultaneous dual sided laminate
- Clear or holographic laminate
- High level physical security
- LCD Control Panel

MC-L



EDIsecure™ MC-L

HIGH PERFORMANCE IN-LINE / STAND-ALONE CARD LAMINATOR

TECHNICAL SPECIFICATIONS

Laminate method	Heater roller (Single: 1/vertical; Dual: 2/vertical)
Laminate Speed	19 seconds
Laminate Mode	Single & dual sided laminate
Halogen Lamp	Single: 500W x 1 vertical Dual: 500W x 2 vertical
Lamination materials	Protected with RFID tag Thin film overlay, clear or holographic: 1.000 repeats/roll Patch, clear or holographic: 500 repeats/roll Patch thickness - 0.5 mil / 0.6 mil / 1.0 mil Patch size - 81 x 51 mm (CR-79, CR-80)
Heat Protect	Dual protection(H/W, Thermal Cutoff)
Laminating Temperature	120°C to 195°C
Warm-up Time	40-50 seconds
Card Type	PVC, Composite PVC
Card Format	ISO CR-80-ISO 7810 (53.98mm W x 85.60 mm L / 3.375" x 2.125")
Card Thickness	0.76mm-1.0 mm (30 mil - 40 mil)
Capacity	Input hopper: 100 cards (0.76 mm / 30 mil.) Stand-alone model only Stacker: 150 cards (Optional) Manual single card feed
CPU	32 bit processor
Interface	USB2.0 (High-Speed); RS232
Security	Kensington® physical lock slot Hopper lock (stand-alone version) and front cover lock (optional)
Operating System for Printer Driver	All 32-bit and 64-bit compatible: Windows 7, 8 & 10 Windows 2003/2008/2012 Server
Certifications	FCC Class A, CE (EN 55022 Class A, EN 550024), cUL, KCC
Display Panel	Graphics type display (128 X 64 dots) - 4 line white LCD status, error and warning notification Set and control the laminator on LCD
Power Supply	INPUT: 90-270V / 47-63Hz
Operating Temp	15°C - 30°C
Operating Humidity	20 - 60 %
Storage Environment	-5°C - 70°C; 20~70% RH
Dimensions & Weight	319.4mm(L) x 215.9mm(W) x 314.1mm(H); 10 kg
Warranty	2 years ⁽²⁾ under specific condition

⁽²⁾Warranty subjected to the use of chromXpert lamination materials



- National ID cards
- Driving licenses
- Resident cards
- Corporate cards
- Campus / student cards

Authorized Reseller / System Integrator

DESKTOP LASER
ENGRAVING
SYSTEM

MATICA

LCP9660





LCP9660

LASER COLOR PERSONALIZATION SYSTEM

Built for maximum reliability and security, the LCP9660 laser color personalization system is the ultimate one-pass solution to issue high quality cards for government card issuance programs and corporate applications. Color print, laser engrave, and inline lamination provides higher protection features for card personalization, and it is also the most advanced technology for even the most demanding security needs.

It is the combination of the color print and laser engraver modules that creates the talking points behind the LCP9660. The high-end, MC660 dye-sublimation retransfer printer looks after the full color over-the-edge printing in a superior, real 600 x 600dpi resolution. Once the card lands in the MC-LX, which is a compact desktop laser engraver (based on high performance MOPA technology), it heads to the optional inline lamination module (MC-L) for a fresh layer of clear, holographic or customized laminate.

The full color printing module can achieve visual and forensic features such as microtext and personalized information using ultraviolet inks or variable reflecting inks. Meanwhile, the laser engraver reinforces the levels of security by either creating surface relief for authenticity verification (and at the touch of a finger), or permanently engraving information into the body of the card. The system can also produce multiple visual security elements (VSE) such as multiple laser images (MLI), changeable laser images (CLI), MSPI™ (Matica Secure Protected Image) and laser protected images which are unsurpassed in the secure protection against forgery.

Once it's turned on, the LCP9660 springs into action, making it immediately available to use because the fiber laser doesn't have to warm up. The surprisingly small amount of maintenance required by the LCP9660 must be one of the greatest customer benefits; all the system needs is a regular lens clean. The new and revolutionary 'scratch-free' TRIPODE (patent-pending) transportation system in the MC-LX laser module allows cards to arrive at their destination fully scratch-safe. There is also an integrated flip-over and vertical adjustment for 'out-of-focus' effects while reduces the number of hardware parts making the activation of options virtually installation-free.

Over the years, knowing how to issue cards that are impossible to counterfeit has become the gold standard dream goal. Governments continue their research into new methods of combatting the fight against forgery, and the LCP9660 laser color personalization system is getting closer to achieving the dream goal. That's thanks to the benefits behind advanced visual security features (through high resolution printing) and the power of engraving technology for the direct personalization into the body of the card.

The Matica LCP9660 laser personalization system is ideal for high-level security corporate needs and government applications such as driver licenses, residence permits, national ID, military and high security IDs.

TECHNICAL SPECIFICATIONS

Print method

- Color: Dye-sublimation, retransfer printing
- Laser engraving
 - Source: Fiber laser, MOPA technology
 - Power: 10W

Print mode

Dual-sided.

Print resolution

- Color: dye-sublimation: 600 x 600dpi resolution
- Laser: 300dpi to 1600dpi. High quality gray scale for ID pictures

Throughput

Approx. 120 cph considering average ID card variable information and laser engraving at 300dpi

Card Types

- PC, PET
- ISO CR80, ISO 7810 (53,98 x 85,60 mm) (212.5" x 337.4")

Card Hoppers

- Input hopper: 250cards (0.76mm – 30mil thickness / card)
- Output hopper: 250 cards (0.76mm – 30mil thickness / card)

Connectivity

USB 2.0

Encoding options

- Magnetic stripe encoder ISO7811
- Dual-interface contact/contactless smart card encoder

Other Options

- Matica MC-L lamination module (single or dual-sided)
- Manual lock

Laser security options

- Visual Security Elements (VSE)
 - CLI/MLI visual security options
 - MSPI™ (Matica Secure Protected Image) -needs vision option
 - Tactile effect
- Vision: offset registration
- Vision: MRZ reading

Optical reader options (integration)

- 1D/2D barcode
- Digital camera for OCR recognition

Software

Laser Layout editor

Dimensions (D x W x H)

- Printer module: 436mm x 340mm x 297mm. (17.2" x 13.4" x 11.7")
- Laser module: 600mm x 400mm x 800mm. (23.6" x 14.5" x 31.4")

Weight

- Printer module: 20kg
- Laser module: 30kg

Warranty

- Printer module: 3 years
- Printhead: Lifetime warranty. Lifetime warranty on printhead⁽¹⁾
- Laser module: 2 years (or 1,000,000 cards, whichever comes first)

⁽¹⁾Warranty subjected to the use of chromXpert® Ribbons

ENTRY LEVEL
RETRANSFER
PRINTER

MATICA
TECHNOLOGIES



XID8100





XID8100

ENTRY LEVEL RETRANSFER PRINTER

The entry level Retransfer Printer XID8100 is the perfect solution for the regular day-to-day demand to personalize of all kind of ID Cards. Due to the retransfer printing technology, the printer can print over-the-edge without any limitations to the card design and graphic layout. The proven modular concept enables the printer to follow upgrade demands at any time. As a standard, the printer is coming in a single side version, which can be upgraded with various options.

The retransfer technology allows the printer to print on all kind of card materials, such as PVC, ABS, PET, hybrid card constructions and even Polycarbonate. The lockable hopper and the front-loading system with replaceable cartridges for the ribbon and the retransfer film make changing the supplies fast and simple.

To connect the printer to a PC the USB and Ethernet interfaces are available as a standard. All necessary information about the printer and its status are shown on the LCD display and the settings can be altered using the 4 push buttons right below the LCD display.

The print engine is based on a metal frame chassis, hence it is a very solid and precise printing module. The compact and attractive design make the printer fit into any office environment and offers an outstanding price / value performance. As all retransfer printers from Matica Technologies, the XID8100 comes with a life time warranty for the print head when using the proper consumables from Matica.

The XID8100 is working with the new SRT ribbon and retransfer film only.

TECHNICAL SPECIFICATIONS

Print Method

Dye-sublimation retransfer

Print Mode

Single- or double-sided (optional) over-the-edge retransfer printing

Print Resolution

300 dpi

Print Speed

Up to 102 cards per hour (single-sided)

Card Types

PVC, Composite PVC, ABS, PET and
Polycarbonate Cards of ISO ID -1/CR-80 size (85.60 x 53.98 mm)

Card Thickness

0.25 - 1.02 mm (hopper adjustment required)

Input Hopper Capacity

200 cards (0.76 mm)

Output Hopper Capacity

100 cards (0.76 mm)

Interface

USB 2.0 and Ethernet

Operating System Support

Windows 7, 8,10 (32 & 64bits)

Power Supply

100/120 V and 220/240 V, 50/60 Hz FCC, CE, UL, GOST-R, and CCC approved

Operating Environment

15°C to 30°C, 35% to 70% noncondensing humidity

Printer Dimensions

343 x 322 x 360 mm (WxDxH)

Weight

13.9 kg (excluding optional built-in items)

Warranty

Printer: 24 months

Printhead: Lifetime warranty using EDIsecure® materials
(other conditions apply)

RETRANSFER
PRINTER

MATICA



XID8300





XID8300

RETRANSFER PRINTER

The modular single- or double-sided *EDIssecure*® XID8300 Retransfer Printer was developed for industrial needs, thus it is provided with various optional modules such as bend remedy, flipper, and encoding modules. Based on wealth and experience with XID Retransfer Technology, the printer is ready for plug and play inline encoding and lamination. With its compact size, the printer delivers the right combination of reliability, performance and affordability for printing durable and secure cards. It almost achieves offset printing quality, even on uneven surface of smart cards.

The XID8300 prints on a variety of card materials including long-lasting, durable non-PVC cards such as ABS, PET, and Polycarbonate. The lockable, spacious card hopper stores up to 200 blank cards to secure an interrupt-free workflow. The user-friendly front-loading system with replaceable cartridges makes changing of supplies fast and simple.

The printer is ready to meet your individual requirements and can be equipped according to the customer needs. Optional magnetic stripe, IC contact and smart card encoding is possible for further demands on card functionality. Extend the life time and security of your cards by joining the printer with the *EDIssecure*® Inline Lamination Modules ILM-LS for single-sided lamination and ILM-DS for simultaneous dual side lamination.

Diverse security features such as electronic security lock, Ken-sington-lock, dye-sublimation UV ink ribbon for invisible security printing, IPSEC for encrypted data transfer through networks, and Security Erase of black data on used supplies help to secure the environment and cards from counterfeiting and to avoid misuse of personal information.

TECHNICAL SPECIFICATIONS

Print Method

Dye-sublimation retransfer

Print Mode

Single- or double-sided (optional) over-the-edge retransfer printing

Print Resolution

300 dpi

Print Speed

Up to 120 cards per hour (single-sided)

Card Types

PVC, Composite PVC, ABS, PET and Polycarbonate Cards of ISO ID -1/CR-80 size, 85.60 x 53.98 mm

Card Thickness

0.25 - 1.02 mm (hopper adjustment required)

Input Hopper Capacity

200 cards (0.76 mm)

Output Hopper Capacity

100 cards (0.76 mm)

Interface

USB 2.0 and Ethernet

Operating System Support

Windows 7, 8, 10 (32 & 64bits)

Power Supply

100/120V and 220/240 V, 50/60 Hz FCC, CE, UL, GOST-R, and CCC approved

Operating Environment

15°C to 30°C, 35% to 70% noncondensing humidity

Printer Dimensions

343 x 322 x 360 mm (WxDxH)

Weight

13.9 kg (excluding optional built-in items)

Warranty

Printer: 36 months

Printhead: Lifetime warranty using *EDIssecure*® materials (other conditions apply)

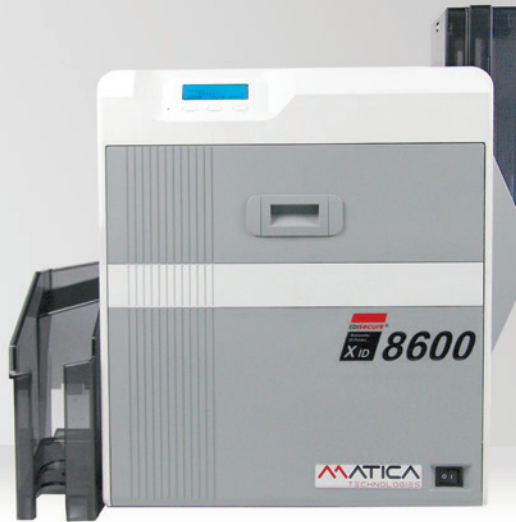
*Attention: The use of non-Matica brand ribbons could adversely affect the performance of your Matica hardware and void the products warranty.

RETRANSFER
PRINTER

MATICA

XID8600





XID8600

HIGH RESOLUTION RETRANSFER PRINTER

The XID8600 Printer is the high-end model of the proven 8xxx series of Matica's XID retransfer printers with an ultra high resolution of 600dpi in card printing quality.

It is the perfect fit for increased security printing demands in ambitious ID Card applications, such as National ID programs, Drivers License Programs and similar. Since most of these projects are requiring the personalization on both sides of the card, the XID8600 already comes with a factory built-in flipper module in the standard model.

The ultra high resolution of 600dpi allows printing crisp, tiny characters, down to a character size of 1,3pt. Electronic fine-line printing and other sophisticated graphical elements can be printed in exciting, nearly equal to pre-printing quality.

The XID8600, as the top-of-the line model, can be configured and customized for all kind of individual requirements. The wide range of XID encoding modules, such as smart card encoder (contactless and contact chips) as well as magnetic stripe encoder, ensures an extraordinary versatility. Printing in high quality is possible on various card materials like PVC, ABS and even Polycarbonate. On request, the XID8600 can be connected to the ILM-LS or ILM-DS Lamination Modules for inline lamination on the front and/or backside of the card for additional security or extended surface protection against abrasion or other physical impacts.

As the ideal retransfer printer solution for projects, the unit comes with diverse standard security features such as an electronic lock, Kensington-lock, IPsec data encryption.

TECHNICAL SPECIFICATIONS

Print Method

Dye-sublimation retransfer

Print Mode

Single- or double-sided over-the-edge retransfer printing

Print Resolution

600 dpi

Print Speed

Up to 120 cards per hour (single-sided)

Card Types

PVC, Composite PVC, ABS, PET and Polycarbonate Cards of ISO ID -1/CR-80 size (85.60 x 53.98 mm)

Card Thickness

0.25 - 1.02 mm (hopper adjustment required)

Input Hopper Capacity

200 cards (0.76 mm)

Output Hopper Capacity

100 cards (0.76 mm)

Interface

USB 2.0 and Ethernet

Operating System Support

Windows 7, 8, 10 (32 & 64bits)

Power Supply

100/120V and 220/240 V, 50/60 Hz FCC, CE, UL, GOST-R, and CCC approved

Operating Environment

15°C to 30°C, 35% to 70% noncondensing humidity

Printer Dimensions

343 x 322 x 360 mm (WxDxH)

Weight

13.9 kg (excluding optional built-in items)

Warranty

Printer: 36 months

Printhead: Lifetime warranty using EDIsecure® materials (other conditions apply)

*Attention: The use of non-Matica brand ribbons could adversely affect the performance of your Matica hardware and void the products warranty.

INLINE
LAMINATION
MODULE

MATICA



ILM-LS/DS





ILM-LS/-DS

INLINE LAMINATION MODULE

Responding to the growing demand for durable and secure, tamper-resistant cards, we have developed the most flexible and fastest lamination program on the market. The *EDIsure*® Inline Lamination Modules help to meet the demanding needs of applications such as secure employee and visitor card, driving license or national ID. The compact *EDIsure*® Inline Lamination Module ILM-LS offers an enormous flexibility to accommodate total cost, throughput requirements, and reliability. With applying *EDIsure*® clear and secure laminates on the card, which includes patches with chip cut-out, the surface will be protected against physical damage and the card life extended. Custom design or generic holographic foils help to protect the cards against tampering. Due to the portrait mode lamination a very high lamination speed of 16 seconds per card (single side) can be achieved.

The ILM-LS can be combined easily for inline lamination with the *EDIsure*® XID 8300 Retransfer Printer, simply attach the unit with the appropriate joining plate to the printer – that's it. Communicating via infrared interface, the lamination parameters for the various card materials are controlled by the printer driver. This allows the use of the laminator with all card materials, including PVC, Composite PVC, ABS, PET, and even Polycarbonate for longest card life. The laminator has a Kensington lock as well as an electronic security lock for the front door to secure the access to the supplies.

The laminator is also available as ILM-DS for simultaneous dual side lamination. Equipped with two lamination cartridges and separate temperature control of the upper and lower heat roller, even different laminates can be applied to the card at the same time. A special version of the ILM-DS can be combined with the *EDIsure*® DCP 360+ Direct Card Printer and XID 93xx Retransfer Printers.

TECHNICAL SPECIFICATIONS

Lamination Method

Thermal transfer

Lamination Mode

Single-sided with ILM-LS

Double-sided (simultaneously) with ILM-DS

Lamination Speed

16 – 30* seconds per card (single- or double-sided)

Speed Settings

3 mm/s – 12 mm/s

Temperature Settings

90°C – 180°C adjustable in 5°C steps

Card Materials

PVC, Composite PVC, ABS, PET

and Polycarbonate Cards of ISO ID-1/CR-80 size, 85.60 x 53.98 mm

Card Thickness

0.76 mm

Dimensions

210 x 326 x 360 mm (WxDxH)

Weight

ILM-LS: 8.1 kg

ILM-DS: 9.0 kg

Power Supply

100/120 V and 220/240 V, 50/60 Hz

GOST-R, CE, and UL approved

Operating Environment

15°C to 30°C, 35% to 70% non-condensing humidity

RETRANSFER
PRINTER

MATICA
TECHNOLOGIES



XL8300





XL8300

RETRANSFER PRINTER

Matica's new XL8300 is an innovative retransfer printer that specializes in printing exceptionally high quality oversized cards for the event management industry and is capable of printing up to 128 cards per hour. The XL8300 offers contactless encoding as an option and like the rest of the XID Series 8 family it retains high quality print production.

The event management and conferencing market is a growth sector that includes conventions, trade shows and sports events such as the Olympics, motorsports, golf, football, tennis and all other competitions. Similarly, corporate environments may need wide format cards where access control requires immediate personal identification. At sites of specialized security the XL8300 has the option to encode contactless cards for electronic access control. Further, the XL8300 can print text, logo and images in UV ink and prints efficiently on a range of card materials including PVC, ABS and PET so its flexibility surpasses the market's alternative solutions.

Producing non-standard, wide format cards that reflect the calibre of events and conference organizers' own branding is a challenge in today's market, and it is critical that companies can feel confident that visitor and guest cards show them in a good light. The XL8300 achieves that, in part because its retransfer technology is superior.

Its compact design makes it practical. Given the limited competition in this particular market, the XL8300 is a unique solution from which to issue extra large, color badges on-site. It is based on Matica's most popular desktop printers: the XID8300.

As one of the newest members of Matica's XID 8 series, the XL8300 benefits from proven and well-known transfer technology, and also offers the largest printable area on the market.

TECHNICAL SPECIFICATIONS

Print Method

Dye-sublimation retransfer (YMCK) / Thermal transfer (Monochrome "K")

Print Mode

Single side retransfer printing on oversized cards

Print Resolution

300 dpi

Print Speed

- Monochrome: up to 128 cards per hour
- Color: up to 85 cards per hour

Card Types

PVC, ABS, PET

Card Thickness

0.25 - 1.02 mm (hopper adjustment required)

Input Hopper Capacity

100 cards (0.76 mm)

Output Hopper Capacity

100 cards (0.76 mm)

Interface

USB 2.0 and Ethernet

Operating System Support

Windows 7, 8, 10 (32 & 64bits)

Power Supply

100/120 V and 220/240 V, 50/60 Hz FCC, CE, UL, GOST-R, and CCC approved

Operating Environment

15°C to 30°C, 35% to 70% noncondensing humidity

Printer Dimensions

549 x 322 x 411 mm (WxDxH) (Incl. oversized card feeder and hopper)

Weight

15,6 kg (excluding optional built-in items)

Warranty

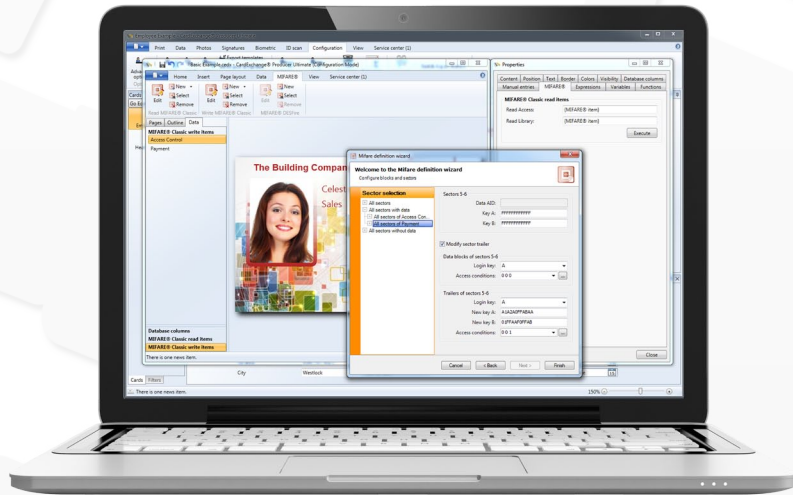
Printer: 36 months

Printhead: Lifetime warranty using EDIsecure® materials (other conditions apply)

ID CARD
PRODUCTION
SOLUTIONS

MATICA
TECHNOLOGIES

CARD EXCHANGE PRODUCER
EDITIONS



Overview of different editions

CardExchange™ Producer

	Go	Premium	Professional	Ultimate
Service and Support				
License via Activation	✓	✓	✓	✓
Online Service Center	✓	✓	✓	✓
Template Migration Tool	✓	✓	✓	✓
Online and Offline Help	✓	✓	✓	✓
FREE End-User Support Forum	✓	✓	✓	✓
Design Tools and Functionality Features				
Various Card Sizes	CR-80 Only	All Sizes	All Sizes	All Sizes
Add Card Templates	5	Unlimited	Unlimited	Unlimited
Pre-defined Templates	✓	✓	✓	✓
Card Template Manager	✓	✓	✓	✓
Step-by-Step Card Design Wizard	✓	✓	✓	✓
Text, Image, and Drawing Objects	✓	✓	✓	✓
Content Alignment Tools	✓	✓	✓	✓
Border Object Features	✓	✓	✓	✓
Ghosting Images	✓	✓	✓	✓
Image Opacity Masking	✓	✓	✓	✓
Resize Font to Fit Feature	✓	✓	✓	✓
1D Barcodes	✓	✓	✓	✓
Manual Data Entries	✓	✓	✓	✓
Grouping of Templates	—	✓	✓	✓
Background Removal	—	✓	✓	✓
2D Barcodes	—	✓	✓	✓
Export Card Preview	—	✓	✓	✓
Automate Manual Insert Actions	—	✓	✓	✓
Unlimited Layouts per Template	—	—	✓	✓
Python Scripting Language	—	—	—	✓
Printing Features				
Print to Windows Printers	✓	✓	✓	✓
Single and Double Sided Printing	✓	✓	✓	✓
UV Panel Printing	—	✓	✓	✓
Batch Printing	—	✓	✓	✓
Windows Print Manager	—	✓	✓	✓
Print Production Reports	—	✓	✓	✓
Auto Print Server	—	—	✓	✓

	Go	Premium	Professional	Ultimate
Photos, Signatures, and Image Features				
Image Tools Editor	✓	✓	✓	✓
Import and Export Images	✓	✓	✓	✓
DirectShow Webcam Support	✓	✓	✓	✓
Twain Image Acquisition	✓	✓	✓	✓
Canon Camera Support	✓	✓	✓	✓
Copy and Paste Photos	—	✓	✓	✓
Advanced Photo Options	—	✓	✓	✓
Signature Pad Support	—	✓	✓	✓
Copy and Paste Signatures	—	✓	✓	✓
Advanced Signature Options	—	✓	✓	✓
Automatic Face Recognition	—	—	✓	✓
Database Connectivity				
Internal MS Access Database	200 Records	Unlimited	Unlimited	Unlimited
MS Excel Connectivity (all Office versions)	—	✓	✓	✓
CSV and Text DB Connectivity	—	✓	✓	✓
MS Access Connectivity (all Office versions)	—	✓	✓	✓
Paradox Connectivity	—	✓	✓	✓
MS SQL Server Connectivity (native)	—	—	✓	✓
Oracle Connectivity (native)	—	—	✓	✓
MySQL Connectivity (native)	—	—	✓	✓
DB2 Connectivity (native)	—	—	✓	✓
PostgreSQL Connectivity (native)	—	—	✓	✓
ODBC Connectivity	—	—	✓	✓
Database Features				
Pre-defined Database Templates	✓	✓	✓	✓
Database Record Edit Window	✓	✓	✓	✓
Enhanced Data Record Presentation (Datagrid)	✓	✓	✓	✓
Record Column Filter and Sorting	✓	✓	✓	✓
Store Photos in Database	✓	✓	✓	✓
Add, Update, and Delete Database Records	✓	✓	✓	✓
Store Signatures and Images in Database	—	✓	✓	✓
Automate Record Insert Options	—	✓	✓	✓
Store Global Counters in Database	—	✓	✓	✓
Store Print Counters in Database	—	✓	✓	✓
Store Environment Variables like Username and Login in Database	—	✓	✓	✓
Drop Down Menus with Fixed Values	—	✓	✓	✓
Create and Store Database Filter per Template	—	✓	✓	✓
Create and Store User Specific Record Lookup Filters	—	5	Unlimited	Unlimited
Live Database Record Lookup Filter	—	✓	✓	✓
Database Column Management (Visible, Editable)	—	✓	✓	✓
Advanced Primary Key Options	—	—	✓	✓
Advanced Update/Insert Options	—	—	✓	✓
Advanced Error Behavior Options	—	—	✓	✓
Create Internal Views/Queries	—	—	✓	✓
Drop Down Menus with Database Table Lookup	—	—	✓	✓
Multiple Database Server Connections	—	—	✓	✓
Store Production Data in Multiple Connected Databases	—	—	✓	✓
Store Photos, Signatures, and Images in Multiple Databases	—	—	✓	✓
True Live Push-Pull Database Records	—	—	✓	✓
Create Column Requirements for Inserting/Updating Records	—	—	✓	✓
Create Column Requirements for Record Printing	—	—	✓	✓
Prompt Value before Printing Records	—	—	✓	✓

	Go	Premium	Professional	Ultimate
Security Features				
Login Feature	—	✓	✓	✓
Create Users	—	5	Unlimited	Unlimited
Create User Groups	—	3	Unlimited	Unlimited
Create User Group Profiles	—	✓	✓	✓
Assign/Remove User(s) To/From Groups	—	✓	✓	✓
Temporary Block User(s)	—	✓	✓	✓
Hide Functionality for Group(s)/User(s)	—	✓	✓	✓
Hide Card Templates for User(s)/Group(s)	—	✓	✓	✓
Hide Database Information for User(s)/Group(s)	—	✓	✓	✓
Advanced Fraud Protection Mechanism	—	✓	✓	✓
Create Specific User Profiles	—	—	—	✓
Account Password Expire Feature	—	—	—	✓
Encoding Features				
Magnetic Encoding	✓	✓	✓	✓
MIFARE® Classic 1K and 4K	—	—	—	✓
MIFARE® DESFire EV1 (all memory formats)	—	—	—	✓
MIFARE® SAM AV2	—	—	—	✓
HID® Proximity Reading	—	—	—	✓
Biometric Features				
Enrollment	—	—	—	✓
Verify	—	—	—	✓
Record Lookup	—	—	—	✓
Record Display	—	—	—	✓
ID Scan Features				
Store and Print Image	—	—	—	✓
Store and Print Photo	—	—	—	✓
Store and Print Signature	—	—	—	✓
Store and Print OCR	—	—	—	✓